

2019



Stereoscopic Society of America 23rd International Stereo Card Competition

Catalogue of Awards & Acceptances



2019-265

Chairman's Comments

I stepped into some pretty big shoes this year, taking over as Chairman from Gene and Liz Mitofsky, and Betty Drinkut, who have run this Exhibition for the past several years. They have done it so well (for so long) that one might become convinced that running the Exhibition is easy. It's not! But, their support and well organized records from past Exhibitions certainly made it as simple as it could be. So, my first thanks are to them for handing me a well running machine (and not laughing too hard when I messed things up).

My next thanks go to our judges:

Michael McKinney, Rolling Hills Estates, CA
Kathy Day, San Pedro, CA
Lucy Chapa, Rancho Palos Verdes, CA

Their efficiency and decisiveness certainly made the actual judging run as smoothly as it could possibly go.

Finally, I'd like to thank the people without whom the Exhibition would simply not exist. Namely, all the entrants who contributed stereo views. The table reports the Exhibition statistics. Unfortunately, we had very few entries from outside of the United States this year. One reason for that is that I didn't receive the entries from two international participants until well after the closing date, despite the fact that they mailed them well in advance.

This year, we'll have two showings of the Exhibition:

3D-Con
Akron, Ohio
August 2 - 4, 2019

LA 3D Club
Pasadena, California
September 19, 2019

David W. Kuntz (davidkuntz@cox.net), SSA Exhibition Chairman
28409 Quailhill Dr.
Rancho Palos Verdes, CA 90275
USA

Stereoscopic Society of America (SSA)
donnamat@aol.com
stereoworld.org/ssa/

2019 SSA Exhibition Entry Statistics	
Entrants	18
Images	72
Accepted	32
Awards	7
HMs	7
Entries by Country and State	
England	1
China	2
USA	15
AL	1
AZ	2
FL	3
IN	1
MI	1
MN	1
NY	2
OR	1
TN	1
VA	1
WI	1

Stereoscopic Society of America 23rd International
Stereo Card Competition

Total Possible Points – 27
Minimum score for acceptance – 21

PSA Stereo Division Gold Medal for “Best of Show”
Eye See by Andrea Shetley, FPSA, ***, Fayetteville, TN

Gold Medal



Eye See by Andrea Shetley, FPSA, ***, Fayetteville, TN

Judges’ Choice

Fairy on a Mushroom by David W. Allen, Master 4, Beaverton, OR
Upper Falls, Old Man’s Cave by Michael Pecosky, Mount Horeb, WI
Cedar Falls by Michael Pecosky, Mount Horeb, WI

**The Ray Zone Award for Entire Stereo Card Design/Presentation
(front and back), sponsored by the LA 3D Club**

Ash Cave by Michael Pecosky, Mount Horeb, WI

**The Cascade Stereoscopic Club Award for
Best Creative (Altered Reality) Image**

Musical Gnomes by David W. Allen, Master 4, Beaverton, OR

Judges' Choice



Upper Falls, Old Man's Cave by Michael Pecosky, Mount Horeb, WI

Judges' Choice



Cedar Falls by Michael Pecosky, Mount Horeb, WI

Judges' Choice



Fairy on a Mushroom by David W. Allen, Master 4, Beaverton, OR

Best Novice Award



Faces 2 by Hung Yuk Fung Garius, Hong Kong, China

Best Creative (Altered Reality) Image



Musical Gnomes by David W. Allen, Master 4, Beaverton, OR

Best Novice Award (person with less than 18 acceptances in PSA recognized Exhibitions)

Faces 2 by Hung Yuk Fung Garius, Hong Kong, China

Honorable Mention Ribbons

Cellar Stairs by David Smith, Dearborn, MI

Flower 66 by Greg Duncan, GMPSA, GPSA, ****, Broadstone, Dorset, England

Flower 63 by Greg Duncan, GMPSA, GPSA, ****, Broadstone, Dorset, England

Concept Car by Michael Cosentino, ****, Dawson, MN

Birdwing Butterfly by Geoff Peters, Master 4, Fairfax, VA

Dill Seed Cluster by Geoff Peters, Master 4, Fairfax, VA

Ancient Hawaiian Petroglyph by Elizabeth Mitofsky, **, Sun City West, AZ

Acceptances

David W. Allen, Master 4, Beaverton, OR

Musical Gnomes – **Best Altered Reality**

Violin Bridge - 1

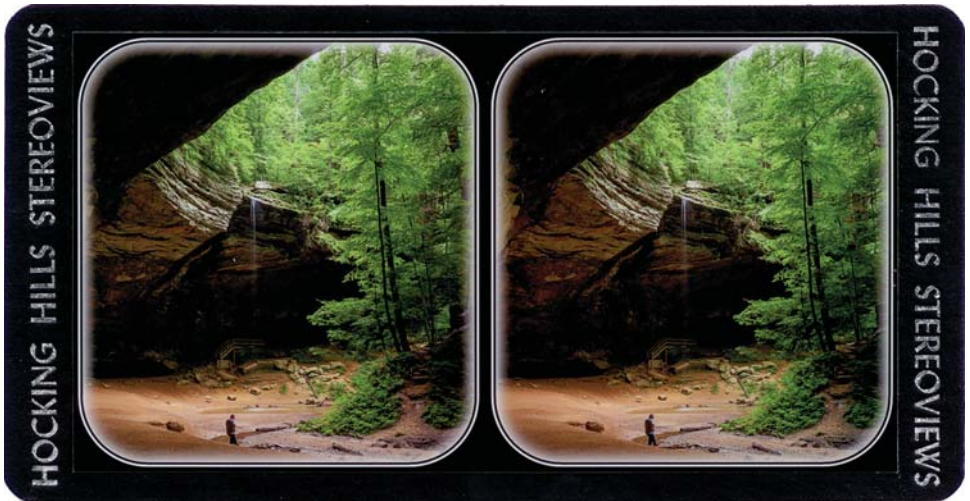
Fairy on a Mushroom – **Judges' Choice**

Michael Cosentino, ****, Dawson, MN

Concept Car – **HM**

Diamonds Galore

Ray Zone Award



Ash Cave by Michael Pecosky, Mount Horeb, WI

Greg Duncan, GMPSA, GPSA, ****, Broadstone, Dorset, England

Venice Carnival 25

Flower 66 – HM

Flower 63 – HM

Hung Yuk Fung Garius, Hong Kong, China

Faces 2 – Best Novice

Polishing Propellers 3

Honorable Mentions



Dill Seed Cluster by Geoff Peters, Master 4, Fairfax, VA



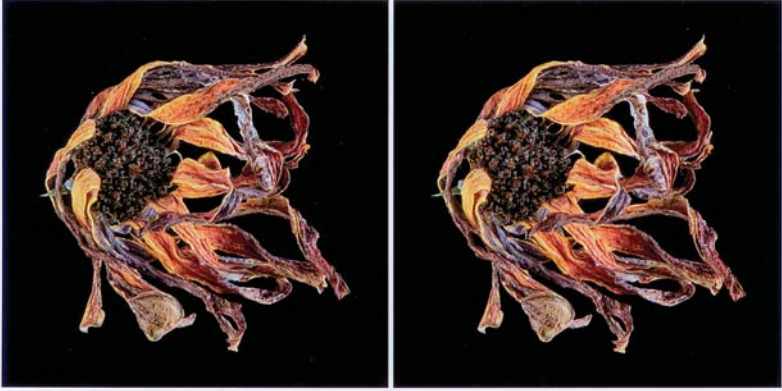
Birdwing Butterfly by Geoff Peters, Master 4, Fairfax, VA

Andrew Lauren, Hicksville, NY
Walking in da Vinci's Footsteps

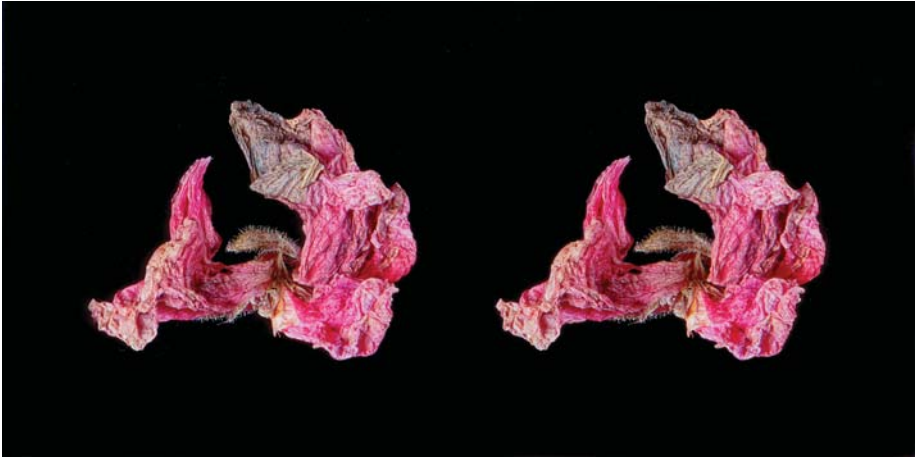
Elizabeth Mitofsky, **, Sun City West, AZ
Ancient Hawaiian Petroglyph – **HM**

Gene Mitofsky, APSA, PPSA, Master 1, Sun City West, AZ
Wild Orchid

Honorable Mentions



Flower 66 by Greg Duncan, GMPSA, GPSA, ****, Broadstone, Dorset, England



Flower 63 by Greg Duncan, GMPSA, GPSA, ****, Broadstone, Dorset, England

Michael Pecosky, Mount Horeb, WI
Upper Falls, Old Man's Cave – **Judges' Choice**
Ash Cave – **Ray Zone Award**
Cedar Falls – **Judges' Choice**
Lanterman's Mill

Geoff Peters, Master 4, Fairfax, VA
Birdwing Butterfly – **HM**
Long-Bodied Cellar Spider
Dill Seed Cluster – **HM**

Honorable Mentions



Cellar Stairs by David Smith, Dearborn, MI

Lee Pratt, HonPSA, Master 12, Madison, AL
Daisy 1
Painting the Cadillacs

Diego Ruiz, Interlaken, NY
Ol' Jerome

Andrea Shetley, FPSA, ***, Fayetteville, TN
Franz Josef Glacier
Plant Walkway
*Eye See – **Gold Medal***

David Smith, Dearborn, MI
Old Staircase
Working at the Window
Pillar Graffiti
*Cellar Stairs – **HM***

Cecil Stone, Master 6, Orlando, FL
Princess White Cloud
Beautiful Bryce 9

Honorable Mentions



Concept Car by Michael Cosentino, ****, Dawson, MN



Ancient Hawaiian Petroglyph by Elizabeth Mitofsky, **, Sun City West, AZ

You are invited to join the Stereoscopic Society of America

The Stereoscopic Society of America (SSA) promotes the art of stereoscopic photography by sponsoring stereographic image folios. Society members view and write comments about each others' stereo images, for fun and skills development. Print and transparency formats are used, and several groups are operating folio circuits to meet the needs of each format. SSA membership is open to all members of the National Stereoscopic Association. Stereographers who may be interested in the SSA can learn more on the on the SSA website stereoworld.org/ssa.

The sponsors of this International Exhibition of Photography have been awarded Recognition by PSA, the world's largest patron of international photographic exhibitions. PSA, although it has provided recognition, is neither a sponsor nor directly involved in the operation of this exhibition.



Valid acceptances received by PSA Members in recognized sections of this exhibition are eligible for PSA Star Ratings, listing in the world-wide PSA Who's Who of Photography and credited towards the PSA Distinctions of QPSA, PPSA, EPSA, MPSA, MPSA2, GMPSA, GMPSA/B, GMPSA/S, GMPSA/G, and GMPSA/P.

PSA is a non-profit organization promoting the advancement of photography in all its forms to novice, amateur and professional photographers worldwide.

For information on membership and the many services and activities of PSA, contact:

psa

PHOTOGRAPHIC SOCIETY OF AMERICA

8241 S. Walker Avenue, Suite 104
Oklahoma City, OK 73139-9401, U.S.A.

E-mail: hq@psa-photo.org

Web Site: <http://www.psa-photo.org>